

FEATURES

Automation 3200 Includes Remote Boot Feature

Refurbish and Recertify Your Aerotech Stage

Latest Software Releases

Motion Control and Positioning Library

SUBSCRIBE/UNSUBSCRIBE

[SUBSCRIBE/UNSUBSCRIBE](#) to the Aerotech E-Newsletter.

CONTACT US

Aerotech, Inc.

Phone: 412-963-7470

Email: sales@aerotech.com

Web: www.aerotech.com

Aerotech Ltd.

Phone: +44-118-9409400

sales@aerotech.co.uk

Aerotech GmbH

Phone: +49-911-9679370

sales@aerotechgmbh.de

TRADESHOWS

Photonics West

San Jose Convention Center

San Jose, CA

Booth 1206

January 23-25, 2007

<http://www.spie.org/info/pw/>

MD&M West

Anaheim Convention Center

Anaheim, CA

Booth 1797

February 13-15, 2007

<http://www.mdmwest.com>

APEX

Los Angeles Convention Center

Los Angeles, CA

Booth 1771

February 20-22, 2007

<http://www.goipcshows.org>

AEROTECH QUICK LINKS

[Knowledge Base - FAQs](#)

[Engineering Reference](#)

[Software & Manual Downloads](#)

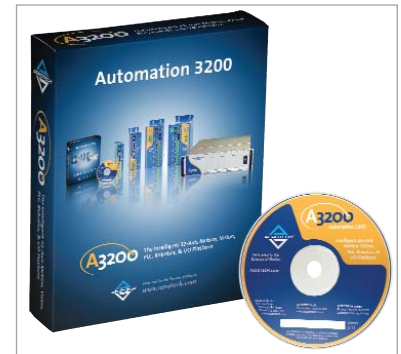
[CAD Downloads](#)

[Job Listings](#)

Copyright © 2006 Aerotech, Inc.

Automation 3200 Motion Control Platform Now Includes Remote Boot

Aerotech's highly successful motion, vision, PLC, robotics, and I/O platform, the **Automation 3200**, is used in numerous applications in the semiconductor, data storage, medical laser processing, automotive, and machine tool industries. The Automation 3200 retains the best features of previous Aerotech controllers and combines them with an advanced, high-performance distributed control architecture that offers up to 32 axes of synchronized motion control.



The latest development in the Automation 3200 (A3200) is a remote boot feature. The Automation 3200 has traditionally supported a remote server architecture that decouples the real-time controller (Nmotion® SMC) from your application software. The Nmotion® SMC engine executes on a server machine that is controlled, over an Ethernet interface, by the Nview® HMI or your custom client-side software.

The latest version of the A3200 enhances the remote server architecture by providing a new remote boot feature. With this option, the remote server software image is dynamically booted onto an A3200 server machine over Ethernet. This provides a number of benefits to the end user. The image, which is created using the Microsoft® Windows® XP Embedded operating system, has a very small footprint (approximately 80 MB for the entire OS and server software) and easily operates out of RAM. Therefore, the server machine is not required to have a hard drive or CD-ROM. Hardware maintenance is reduced by using solid-state RAM storage instead of a traditional hard drive with mechanical parts. In addition, upgrading the server software is as simple as replacing the old image – i.e., all of the configuration and program files are conveniently stored together on the client PC. Fully headless operation is supported, meaning that you can store the server machine without attaching a monitor, keyboard or mouse. And, most importantly, the embedded image is optimized to provide the best hardware and software environment for the real-time controller. The new remote boot option offers a convenient and easily maintainable way for applications to employ our remote server architecture.



The Automation 3200 is supported by a complete line of digital drives (Ndrive®) and drive racks (Npaq®).

For more information:

Contact an Aerotech [Application Engineer](#).

View the [Automation 3200](#), [Ndrive®](#) series, and [Npaq®](#) on our website.

FEATURES

Automation 3200 Includes Remote Boot Feature

Refurbish and Recertify Your Aerotech Stage

Latest Software Releases

Motion Control and Positioning Library

SUBSCRIBE/UNSUBSCRIBE

[SUBSCRIBE/UNSUBSCRIBE](#) to the Aerotech E-Newsletter.

CONTACT US

Aerotech, Inc.

Phone: 412-963-7470

Email: sales@aerotech.com

Web: www.aerotech.com

Aerotech Ltd.

Phone: +44-118-9409400

sales@aerotech.co.uk

Aerotech GmbH

Phone: +49-911-9679370

sales@aerotechgmbh.de

TRADESHOWS

Photonics West

San Jose Convention Center

San Jose, CA

Booth 1206

January 23-25, 2007

<http://www.spie.org/info/pw/>

MD&M West

Anaheim Convention Center

Anaheim, CA

Booth 1797

February 13-15, 2007

<http://www.mdmwest.com>

APEX

Los Angeles Convention Center

Los Angeles, CA

Booth 1771

February 20-22, 2007

<http://www.goipcshows.org>

AEROTECH QUICK LINKS

[Knowledge Base - FAQs](#)

[Engineering Reference](#)

[Software & Manual Downloads](#)

[CAD Downloads](#)

[Job Listings](#)

Copyright © 2006 Aerotech, Inc.

Get Your Aerotech Stage Refurbished and Recertified by the Pros!

Did you know we can refurbish and recertify almost any Aerotech stage to original specifications in approximately two weeks, for a fraction of the cost of buying a new or similar replacement stage? Call or email us today for a free quote!



Phone: 1-412-967-6440

Email: service@aerotech.com

Go [HERE](#) for Customer Service on our website.

Having trouble with the way our e-newsletter is displayed, or not receiving every issue? The constant fight against SPAM may have necessitated a change in your organization's SPAM filter. Ask your IT department to add our IP address to the white list/safe list.

Latest Software Releases

This section lists the latest revisions of Aerotech software, providing a handy method of checking to see that your Aerotech software, and hence your Aerotech system, is working at peak efficiency. All Aerotech software is available for instant download from our website — just click the software title! An entry in **red** means the software has been updated since our last newsletter.

| Software | Version | Description |
|---|---------------------|---|
| A3200 Digital Automation Platform | Version 2.17 | Nmotion® SMC Libraries and Utilities, Ncontrol® Software Developers Kit, Nview® HMI, Windows Help Files |
| U600 HMI | Version 6.00.136 | Windows® HMI |
| U600 SDK | Version 6.00.136 | U600 Software Developers Kit |
| U600 LIB | Version 6.00.136 | Windows® Help File, U600 Libraries and Utilities |
| U500 PC-Bus-Based Controller | Version 5.22 | Windows® HMI and Windows® Help File |
| U511 Stand-Alone Controller | Version 5.22 | Interface Software and Windows® Help File |
| Soloist Single Axis Controller | Version 2.04 | Interface Software and Windows® Help File |

FEATURES

[Automation 3200 Includes Remote Boot Feature](#)

[Refurbish and Recertify Your Aerotech Stage](#)

[Latest Software Releases](#)

[Motion Control and Positioning Library](#)

SUBSCRIBE/UNSUBSCRIBE

[SUBSCRIBE/UNSUBSCRIBE](#) to the Aerotech E-Newsletter.

CONTACT US

Aerotech, Inc.

Phone: 412-963-7470

Email: sales@aerotech.com

Web: www.aerotech.com

Aerotech Ltd.

Phone: +44-118-9409400

sales@aerotech.co.uk

Aerotech GmbH

Phone: +49-911-9679370

sales@aerotechgmbh.de

TRADESHOWS

Photonics West

San Jose Convention Center

San Jose, CA

Booth 1206

January 23-25, 2007

<http://www.spie.org/info/pw/>

MD&M West

Anaheim Convention Center

Anaheim, CA

Booth 1797

February 13-15, 2007

<http://www.mdmwest.com>

APEX

Los Angeles Convention Center

Los Angeles, CA

Booth 1771

February 20-22, 2007

<http://www.goipcshows.org>

AEROTECH QUICK LINKS

[Knowledge Base - FAQs](#)

[Engineering Reference](#)

[Software & Manual Downloads](#)

[CAD Downloads](#)

[Job Listings](#)

Copyright © 2006 Aerotech, Inc.

Motion Control and Positioning Library

This resource provides a short summary and a link to articles, tutorials, white papers, and other materials that discuss problems and solutions involving motion control and positioning equipment and systems.

Articles

Tackling the Automation Challenge

Automation in the medical device industry continues to grow at a very healthy pace. This article discusses the reasons for this growth, the areas in which this growth is taking place, as well as Aerotech's contribution to this trend. Read the full article [HERE](#).

Precise Triggering of External Events Based on Axis Position

An axis-based trigger in the controller can significantly improve part quality, reduce cycle time, and eliminate processing problems. This article discusses Aerotech's unique PSO (Position Synchronized Output) option, and how any application that requires precise data acquisition or process action linked to axis position can benefit from it. Read the full article [HERE](#).

Linear Motors Application Guide

A tutorial guide to the history, design, and application of linear motors. Get the PDF [HERE](#).

Air Bearings Aid Assembly of Flat Panel Displays

Many manufacturing processes for flat panel displays (FPDs) require precision motion control for feature generation and inspection. Aerostatic bearings are an excellent choice for many of these processes because they allow precise, repeatable motion; are clean-room compatible; and are maintenance-free. Read the full article [HERE](#).

Kinematics and Precision Stages Drive Laser Welding

Real-time kinematics coupled with direct-drive positioning systems provide the highest performance solution for laser seam-welding applications. The higher throughput, lower maintenance, and improved part quality available with this approach result in a system with the lowest total cost of ownership. Read the full article [HERE](#).

Applications Dictate Gimbal Selection

The choice between [direct-drive](#) and [gear-driven](#) gimbals and optical mounts presents an opportunity for a comparison of the pros and cons for each. Read the full article [HERE](#).

Search the Aerotech Article Archive

Standards Organizations

1394 Trade Association

<http://www.1394ta.org>

ISA, the International Society for Measurement and Control

<http://www.isa.org>

IEC

<http://www.iec.ch>

ISO

<http://www.iso.org>