

**OPERATOR'S MANUAL  
FOR THE  
4005/4006  
STEPPING MOTOR TRANSLATOR**

**MAY, 1987**



**AEROTECH, INC., 101 Zeta Drive, Pittsburgh, PA 15238  
(412) 963-7470 TWX 710-795-3125**

---

## TABLE OF CONTENTS

CHAPTER 1: INTRODUCTION.....	1-1
SECTION 1-1 GENERAL DESCRIPTION.....	1-1
SECTION 1-2 FRONT END.....	1-1
SECTION 1-3 SEQUENCER.....	1-2
SECTION 1-4 POWER SUPPLY.....	1-2
SECTION 1-5 SYSTEM CAPABILITY.....	1-2
CHAPTER 2: SPECIFICATIONS.....	2-1
SECTION 2-1 MAXIMUM RATINGS.....	2-1
SECTION 2-2 MECHANICAL CHARACTERISTICS.....	2-1
SECTION 2-3 ELECTRICAL CHARACTERISTICS.....	2-1
CHAPTER 3: INSTALLATION AND OPERATION.....	3-1
SECTION 3-1 CONTROL HOOK UP CONSIDERATIONS.....	3-1
A. INPUT ELECTRICAL CHARACTERISTICS.....	3-1
B. LOCAL/REMOTE MODE.....	3-1
C. LOCAL MODE OPERATION.....	3-2
D. REMOTE MODE OPERATION.....	3-2
E. LIMITS.....	3-3
F. READOUT.....	3-4
G. LO/HI CURRENT.....	3-4
H. SEQUENCER INPUTS.....	3-5
I. AEROTECH FRONT PANEL SWITCH ASSEMBLY.....	3-5
SECTION 3-2 OTHER HOOK UP CONSIDERATIONS.....	3-6
A. 5V/12V LOGIC LEVEL SELECTION.....	3-6
B. MOTOR CONNECTION .....	3-6
C. AC POWER INPUT.....	3-7
D. SUPPLIES AVAILABLE FOR EXTERNAL USE.....	3-7
SECTION 3-3 ADJUSTMENTS.....	3-7
A. MOTOR CURRENT - 4005.....	3-7
B. SUPPRESSION VOLTAGE - 4005.....	3-8
C. INTERNAL CLOCK FREQUENCY.....	3-8
D. LO I CURRENT LEVEL ADJUSTMENT.....	3-8
CHAPTER 4: MAINTENANCE.....	4-1
SECTION 4-1 PERIODIC MAINTENANCE.....	4-1
SECTION 4-2 TROUBLESHOOTING.....	4-1

ADDENDUM NOTICE FOR REV. D AND ABOVE 630-1052 MODULE ASSEMBLIES:

J1 was a 6 pin connector and is now a 10 pin connector. The same pin numbers are now used, except pin 6 (low/high current command) is now pin 7. Pin 6 is now a keying pin.

For other pin-out information, see the system print or drawing 630D1052 Rev. D and above.

## CHAPTER 1: INTRODUCTION

### SECTION 1-1 GENERAL DESCRIPTION

The Aerotech Model 4005 (40 volt, 5 amp/phase) stepping motor drive was designed to drive 2, 3 and 4 inch frame size, 4 phase bidirectional stepping motors. The module contains a power supply, power amplifier, sequencing logic to convert input pulses directly to step information, a front end incorporating an internal clock generator to provide slew and step capability, and logic for incorporation of limit switches.

Total CMOS logic operating at 5 or 12 volts provides excellent noise immunity. The unipolar chopper drive, operating from 40V, commands rapid motor current response for high stepping rates while maintaining unequaled efficiency. A unique switching technique provides efficient, adjustable, high voltage suppression for the fast current decay required in high stepping rate applications. No external resistors or components are required for operation; simply add a 115 or 230 VAC supply, clock and direction or slew and step commands, and the motor.

### SECTION 1-2 FRONT END

The front end incorporates an internal oscillator and a single pulse debounce latch to generate a local clock for the sequencer.

There is also a local direction input. Either these local clock and direction signals or another clock-direction pair, called remote clock and direction, can be selected for routing to the sequencer by applying the appropriate logic level to the "LCL/REM" input at J2-16. The front end also has limits logic circuitry that can accept signals from a limit switch assembly. Once a limit switch is closed, clock signals driving the motor further into the limit are inhibited, but changing direction removes the inhibit from the clock signal so that the motor can move back from the limit.

### **SECTION 1-3 SEQUENCER**

The sequencing logic is capable of operation in the two-phase-on, one-phase-on, full-step or half-step sequence; selection is accomplished by logic commands. The adjustable output current can be reduced (to approximately 60% of the set value) by a logic command, permitting reduced power levels when desired.

### **SECTION 1-4 POWER SUPPLY**

The fused, isolated, internal power supply operates from 115 or 230 VAC and provides all necessary operating voltages in addition to regulated +5 VDC (+12 VDC option) and unregulated  $\pm 40$  VDC for external use.

### **SECTION 1-5 SYSTEM CAPABILITY**

The module mates with the optional Front Panel Switch Assembly, or can mate to either the 1OKR, Model 10D or 20D Indexer, or the Parallel Incremental Card.

## CHAPTER 2: SPECIFICATIONS

### SECTION 2-1 MAXIMUM RATINGS

Peak Output Voltage	40 Volts
Continuous Output Current	5 amps/phase
Operating Temperature	0 to 50 C
Storage Temperature	-30 C to 85 C
AC Line Voltage	125/250 VAC depending on transformer connections

### SECTION 2-2 MECHANICAL CHARACTERISTICS

Weight	14 lbs.
Dimensions	6.2" wide x 7.5" long x 6" high
Mounting dimensions	5 1/2" x 3 5/8"
Mounting screws	1/4-20, 3/8" maximum depth into baseplate.

### SECTION 2-3 ELECTRICAL CHARACTERISTICS

Input Power	100-125 VAC, 200-250 VAC; 50-60 HZ
Output Power	
Maximum @ 5A/0	270 Watts
Continuous	160 Watts
Switching Frequency, constant	5KHz; 16KHz (Ultra- sonic Option)
External Factor (2.5mH load)	1.005

External Supply Availability  
 +40 VDC Unregulated .5 amps  
 -40 VDC Unregulated .1 amps  
 +5 VDC Regulated .05 amps

Internal Clock Frequency 100-1000 Steps/sec

Input Clock Frequency 0 to 20 KHz

Input Impedance: Clock, Full/  
 Half, one/two, step, slew  
 LCL/Rem, Direction, LO I  
 and Limits 0.1 M

Input Signal Levels 0 to +5V or +12V,  
 depending on logic  
 power setup

Minimum Clock Pulse Width  
 (Clock occurs on  
 positive going edge) 2 uS

Minimum time for Clock at 0  
 level 2 uS

Minimum time between clock  
 Leading edge and DIR  
 Transition ± 600 nS

Heatsink Temperature	HORIZONTAL	VERTICAL	FAN COOLED
Rise above ambient, C			(100CFM)
5 amp output	60	40	10
3 amp output (J1-6 Open)	40	30	5

## CHAPTER 3: INSTALLATION AND OPERATION

### SECTION 3-1 CONTROL HOOK UP CONSIDERATIONS

The 4005 stepping motor drive can be operated in local mode from switches or in remote mode from external clock and direction. It has an internal clock generator to operate manually at start/stop speeds with only a few external switches. For automated or high speed use, the 4005 can be run from external clock and direction inputs. Accordingly, the inputs required for using the 4005 by itself are grouped on J2, and the inputs required for use with external clock and direction are grouped on J1. It is also possible to switch from one mode to another without rewiring since a logic input called local/remote has been included in the unit.

#### A. INPUT ELECTRICAL CHARACTERISTICS

Most inputs to the module are standard CMOS inputs with 100K input pull-up resistors to the logic supply (+V). Leaving an input open is equivalent to putting a "1" level on the input. Grounding the input is equivalent to a "0" level. One input on J2-7, one/two phase on, has a 1K input pull-down resistor to ground. Leaving this input open is equivalent to putting a "0" level on that input, and a logic "1" level or V+ is needed for a input high state. J1-3 remote clock has a 100K pull-down resistor to ground.

#### B. LOCAL/REMOTE MODE

The local/remote mode is the key to the flexibility of the 4005. When a logic "1" is present at J2-16 (LCL/RMT), the signal from the local clock generator is routed to the sequencer which generates the sequence of drive signals for each winding of the motor. Also the DIR (direction) input at J2-11 is routed to the sequencer. When a logic "0" is present at J2-16, the signals from the internal clock generator and J2-11 (DIR) are ignored, while the signals on J1-3 (remote clock) and J1-4 (remote direction) are the ones that are routed to the sequencer. If the



unit is to be run only from remote clock and direction inputs, provision for jumpering the LCL/REM input to ground has been provided. Inserting a jumper between points 3 and 4 will lock the unit in remote mode.

### **C. LOCAL MODE OPERATION**

If the 4005 is to be operated by itself, it should be placed in local mode by letting J2-16 go high. This will allow the local direction input and the local clock generator to input to the sequencer. The local clock generator consists of two parts; a single step debounce latch requiring two inputs. These inputs, called NO (normally open) on J2-12 and NC (normally closed) on J2-4, are meant to be connected to the normally open and normally closed contacts of an SPDT momentary action pushbutton. The moving contact of the pushbutton should be connected to ground (J2-13). Pressing and releasing the pushbutton will send just one clock pulse to the sequencer and the motor will advance one step. The slew oscillator has one input at J2-5. Grounding this input will turn this oscillator on and a constant frequency pulse train will be sent on the sequencer. Also, in local mode, the DIR input at J2-11 is routed to the sequencer.

### **D. REMOTE MODE OPERATION**

If the unit is to be operated in the remote mode, either J2-16 should be grounded or a jumper should be inserted at points 3 and 4. When this is done, the local clock generator is isolated from the rest of the unit and the local direction input J2-11 is ignored. Instead J1-3 remote clock, and J1-4 remote direction, are patched to the sequencer. The inputs on J2 other than the step inputs, slew, and direction are still effective.

The Remote input jack J1 has been designed to interface completely to Aerotech clock and direction generating modules, such as the 10KR high speed ramper, or the Parallel Incremental Stepping Motor Card. The 4005 sends +40V and ground to these modules for module power on J1-1 and J1-2, respectively. J1-5 is an input for the Reset signal that is routed to the accessory readout (see section 3-1F for further description of the readout connections). J1-6 is LO/HI current (see section 3-1G). It is on this jack since it is usually generated in the same equipment that generates the clock and direction signals.

#### **E. LIMITS**

The 4005 can restrict the range of travel of the load the motor is driving. The limit circuitry prevents the motor from advancing beyond a point sensed by an external limit switch or external limit sensing logic.

The limits logic circuit of the 4005 has two inputs; CW LMT and CCW LMT (clockwise limit lo and counterclockwise limit lo) on TB1-13 and 14 respectively. These inputs are meant to be connected to normally open switches that close to ground when a limit is reached, but logic signals can also be used ("0" = limit reached). Since a logic "1" on the DIR input to the sequencer is taken to mean clockwise rotation of the motor, CW LMT input is effective when the DIR input to the sequencer is a "1".

When a limit input is said to be effective, it means that a "LO" level on it will cause the clock input to the sequencer to be interrupted. If the DIR signal to the sequencer changes while the clock is interrupted by one of the limit inputs, that change will make the limit input no longer effective, and the clock signal to the sequencer will no longer be interrupted.

For example, the DIR input is a "1" and the motor is turning clockwise. The CW LMT limit switch is activated and CW LMT goes low, interrupting the clock and stopping the motor. The operator changes directions, the CW LMT input is now no longer effective, and the clock input is no longer interrupted. The motor begins to turn counterclockwise and the CW limit switch now opens. Once the CW limit switch opens it is then again possible to operate the motor in the clockwise direction.

If limits are not needed, the inputs can be left open.

#### **F. READOUT**

If it is desired to know the number of steps the motor has moved from a reference point, an external readout can be used. J3 of the 4005 contains three signal outputs that can be sent to the external readout. They are Reset on J3-5, clock on J3-3 and DIR on J3-4. Clock and DIR are the signals that go to the sequencer, whatever mode the unit is in. The Reset signal is not used by the 4005. It can be brought in from a switch or other piece of equipment on J2-2 or J1-5. If there is no connection on either of these points J2-7 will go to a "1".

#### **G. LO/HI CURRENT**

The 4005 has an adjustment called "current adjust" (see chapter 4). This sends the current through the windings of the motor. This current would flow while the motor is not stepping, causing heat and wasting energy. To reduce the current flowing through the motor, an input has been provided called LO/HI current on J1-6. When J1-7 is a "0" the current through the motor is constrained to the level set by the "current adjust". When J1-7 is a "1" the current limit is reduced to approximately 50% of its set value.

Since leaving this input open puts a "1" on the input, this input should be grounded if this feature is not to be used. The Aerotech 10KR, 10D, 20D, and PISM cards have a signal output called CZ, designed to attach to this input which will reduce the motor current about 20mS after the motor stops stepping.

#### **H. SEQUENCER INPUTS**

J2 also has full/half step control on J2-6 and one/two phase on control at J2-7. They go directly to the sequencer and affect the sequence of the individual winding on commands. A logic "1" on J2-6 causes the motor shaft to turn through a 1.8 degree step angle with each clock pulse. If a logic "0" is present at J2-6, the motor moves through a 0.9 degree step angle with each clock pulse. Leaving J2-6 open causes a logic "1" to be present and full step operation will occur.

The other sequencer input on J2-7, one/two phase on, only has an effect in full-step mode. In the full-step mode, there are two windings of the motor on at any instant. However, a stepping motor can be operated in full-step mode with only one winding on at any instant. This reduces current consumption, but it also reduces motor torque, and makes the motor more susceptible to drop-out. A "1" on J2-7 causes the unit to operate in one-phase-on mode. No connection causes a "0" to be present and the unit will run in 2-phase-on mode.

#### **I. AEROTECH FRONT PANEL SWITCH ASSEMBLY**

The Aerotech front panel switch assembly C690-1056 is a useful accessory for the 4005 when it is used in the local mode. It's use greatly simplifies the wiring of the switches for local mode operation. S1 (momentary action) connects correctly to the step NO and NC inputs. S2 (alternate action) connects to the DIR input. S3

(momentary action) connects to the slew input. S4 (momentary action) connects to the reset input. S5 (alternate action) switches the outputs of the switch assembly between two output jacks for X-Y systems. S6 (alternate action) will provide the switching function needed for the LCL/REM command, provided pin 16 of the output jack used is jumpered to either terminal A or B of S6. S7 is meant to be used with other Aerotech equipment. S8 (alternate action) connects to the full/half step input. All these connections (except LCL/REM) are made between the switch assembly and the 4005 and are made at one time with a 16 conductor ribbon cable and two press-on DIP plugs.

The 4005 input "one/two phase on" is not connected to the switch assembly but most users will leave this input unconnected. All switches are mounted on a common frame and the assembly requires one rectangular cutout and two screw holes for panel mounting.

## **SECTION 3-2 OTHER HOOK UP CONSIDERATIONS**

### **A. 5V/12V LOGIC LEVEL SELECTION**

The 4005 comes standard with a logic supply level of +5V, allowing it to interface with TTL logic levels. However, logic operation at 12V is possible. To convert the 4005 to 12V logic, the printed circuit trace between jumper points 6 and 7 must be cut and a jumper inserted between points 5 and 6.

### **B. MOTOR CONNECTION**

Connection terminals for the motor are on TB1. The four phases are connected as:

OA to TB1-9  
OB to TB1-10  
OC to TB1-11  
OD to TB1-12

The two power leads are connected at TB1-7 and TB1-8, which connect through fuses to the +40 supply. Since the coding of motor connections is not standardized, figure 1, a timing diagram of the sequence that the outputs follow, can be found in the appendix. This can be compared to the motor spec. sheet to determine the correct wiring of the motor.

#### **C. AC POWER INPUT**

Power requirement is less than 2 amp, 115V AC or 1 amp, 230 VAC. A 50/60 Hz source must be used for the fan. If a fan cooled unit is not required (discuss application with the factory), a 50 to 400 Hz source may be used. Line voltages may vary +10 - 15%. AC power is connected to TB1-1 and -2, figure 2. AC HI should be connected to TB1-1, the fused input. If operation from 230 VAC is desired see schematic note 1.

#### **D. SUPPLIES AVAILABLE FOR EXTERNAL USE**

The 4005 furnishes DC power for external use. The logic supply @ 20 mA is available at J2-14. +40 VDC unregulated at 0.5 amp is available at J1-1 and TB1-4. -40VDC at 100 mA is available at TB1-5. +5V or +12V at 30 mA is available at TB1-6 (see section 3-2A).

### **SECTION 3-3 ADJUSTMENTS**

#### **A. MOTOR CURRENT - 4005**

Motor current can be adjusted by removing fuse F2 or F3 and replacing it with a DC ammeter, positive lead on clip at edge of board. Connect

the motor per section 3-2B and turn R39 full CW (minimum current position). Connect J1-7 to ground. Apply AC power and adjust R39 for the desired (motor not stepping) current. Remove AC power, the ground from J1-7, and replace the fuse.

#### **B. SUPPRESSION VOLTAGE - 4005**

This adjustment has been made at the factory and should not require further adjustment. Any change in this voltage will require motor current re-adjustment. Connect an oscilloscope between GND on TB1-3 and a cathode of D1 to D4. Adjust R20 (CW decreases voltage) so that the peaks of the voltage are less than 80 volts. This voltage may be decreased to any value from 40 to 80V.

#### **C. INTERNAL CLOCK FREQUENCY**

The internal clock frequency can be adjusted by grounding J2-5 and observing the frequency at terminal post 2 (TP2). Adjustment is made at R8. If a step rate higher than the maximum attainable from adjusting R8 is desired, R7 can be removed and a lower value substituted.

#### **D. LO I CURRENT LEVEL ADJUSTMENT**

Normally a LO I command reduces the current level by about 50%. If a different percentage reduction is desired, R38 can be changed to a different value. Set the current limit as per section 3-3A, but maintain AC power and leave the ammeter connected. Now remove the ground from J1-7 and observe the current. If this LO I current level is too high, insert a larger value resistor in place of R38; if too low, a smaller value. Remove AC power and replace fuse.

## CHAPTER 4: MAINTENANCE

### SECTION 4-1 PERIODIC MAINTENANCE

The 4005 requires no periodic maintenance. The adjustments of section 3-3 may be performed periodically if the adjusted values are critical to its use. If operated in a dirty environment, the PC card and heat sink should be kept clean enough to see what color is under the dirt. Electricity conductive dirt (metal chips, etc.) should be kept away from the unit.

### SECTION 4-2 TROUBLESHOOTING

Field reports have shown that the majority of problems associated with the 4005 were problems caused by other components in the system in which it was used. If a problem with the 4005 is suspected, the 4005 should be first checked to verify that it is defective. The 4005 should be placed in local mode, and given a slew command. If connected, the limit inputs should be disconnected. The motor should step. If the motor does not step correctly, the continuity of the windings should be checked.

To test the integrity of each of the four-phase output stages, the unit should be placed in local mode and single stepped. The timing diagram in the appendix should be consulted to verify that the proper sequence of phase on commands is being generated and the voltage to ground of the outputs should be as shown in figure 1, appendix.

Since the four output transistors Q1 - Q4 are vulnerable to an incorrect connection or a shorted motor winding, they account for the majority of field failures. When they fail, they fail by shorting collector to emitter. This shorts a motor winding to ground, and blows a fuse. An ohmmeter can be used to check for shorted output transistors. First remove AC power and motor connections and connect the negative lead of the ohmmeter to ground. Touch the positive lead successively to TB1-9, 10, 11 and 12. If the meter indicates a short, the transistor associated with that output should be replaced. When replacing



transistors, be sure to use the insulator between the transistor and the heatsink. Verify the transistor and heatsink have no electrical continuity between them by using an ohmmeter set for the highest range.

## A

AC power input, 3-7

## C

Control hook up, 3-1

## D

DC power supply, 3-7

## E

Electrical characteristics, 2-1

## F

Front end, 1-1

Front panel switch, 3-5

## G

General description, 1-1

## H

Hook up, 3-6

## I

Input, 3-1

Internal clock frequency, 3-8

## L

Limits, 3-3

Lo current level adjustment, 3-8

LO/HI current, 3-4

Local mode, 3-2

Local/remote mode, 3-1

Logic level selection, 3-6

## M

Maintenance, 4-1

Maximum ratings, 2-1

Mechanical characteristics, 2-1

Motor connection, 3-6

Motor current, 3-7

## P

Power supply, 1-2

## R

Readout, 3-4

Remote mode, 3-2

## S

Sequencer, 1-2

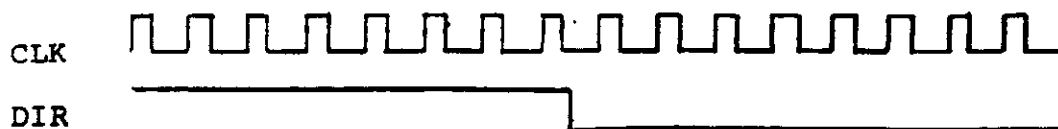
Sequencer inputs, 3-5

Suppression voltage, 3-8

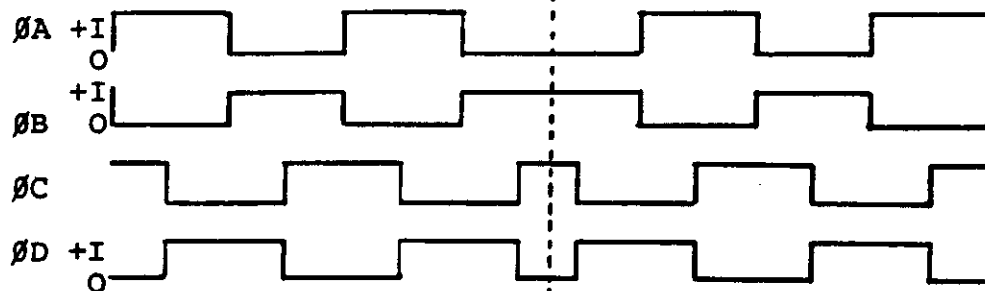
System capability, 1-2

T  
Troubleshooting, 4-1

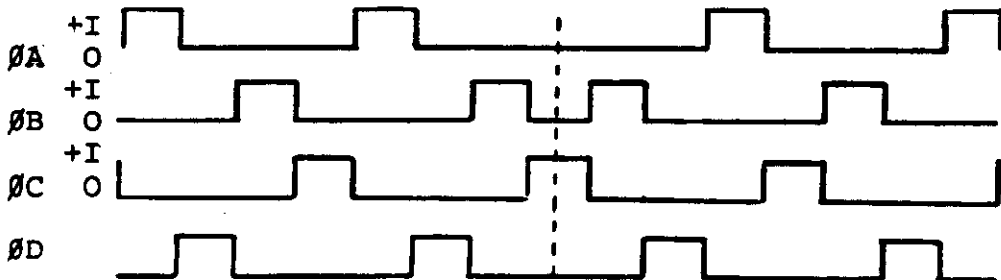
Fig. 1: Nominal Current Timing Diagram-4005



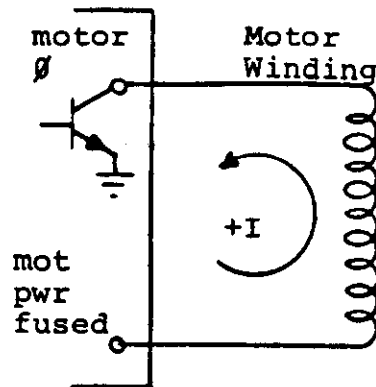
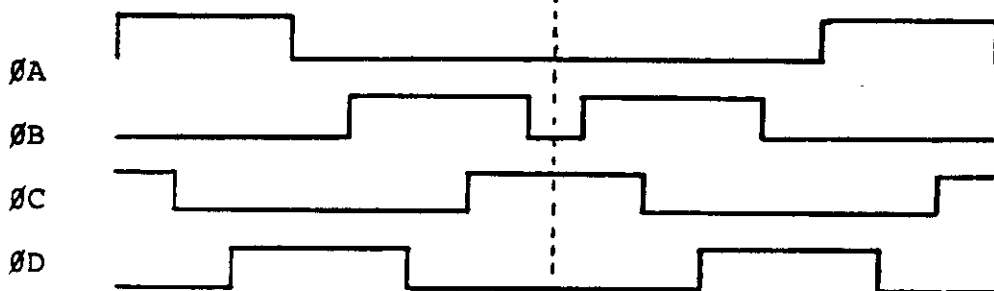
Full Step 2 Phase On



Full Step 1 Phase On



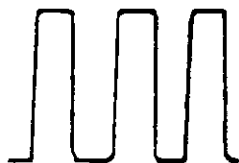
1/2 Step 2 Phase On



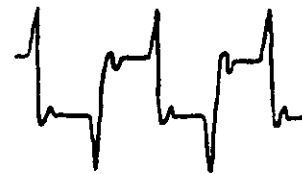
Motor and terminals are current sinks when on; source is Motor Power fused terminal.

Fig. 1: Output Waveforms

When motor is not stepping, the outputs that are "ON" look like this.



The "OFF" outputs look like this.





## Warranty and Field Service Policy

Aerotech, Inc. warrants its products to be free from defects caused by faulty materials or poor workmanship for a period of one year from date of shipment from Aerotech. Seller's liability is limited to replacing, repairing or issuing credit, at its option, for any products which are returned by the original purchaser during the one-year period. Seller makes no warranty that its products are fit for the use or purpose to which they may be put by the buyer, whether or not such use or purpose has been disclosed to seller in specifications or drawings previously or subsequently provided seller, and whether or not seller's products are specifically designed and/or manufactured by seller for buyer's use or purpose. Aerotech's liability on any claim for loss or damage arising out of the sale, resale or use of any of its products shall in no event exceed the selling price of the unit.

### Returning Goods Procedure

Claims for incorrect or defective materials must be filed within thirty (30) days from delivery at buyer's place of business. No units or systems may be returned, in or out of warranty, without first obtaining approval from the seller, and no claim will be allowed nor credit given for units or systems returned without such approval.

### Returned Goods Warranty Determination

If possible, after approval from Aerotech, the defective unit or system is to be returned to the factory with statement of problem and transportation prepaid (no c.o.d. or collect freight shipments will be accepted). After Aerotech's in-plant examination, warranty or out-of-warranty status will be determined. If upon Aerotech's examination of such unit or system, warranted defects exist, then the unit or system will be repaired at no charge and shipped, prepaid, back to the buyer. If an out-of-warranty situation exists, the buyer shall be

notified of the repair cost immediately. At such time, the buyer must issue a purchase order to cover the cost of the repair or authorize the unit or system to be shipped back as is, at the buyer's expense.

### On-Site Warranty Repair

If the system or unit cannot be made functional by telephone assistance or by sending and having customer install replacement parts, and cannot be returned to the Aerotech factory for repair, and if it is determined that the problem could be warranty-related, then the following policy applies:

Aerotech will provide an on-site field service representative in a reasonable amount of time, provided that the customer issues a bona-fide purchase order to Aerotech covering all transportation and subsistence costs. For warranty repairs, customer will not be charged for cost of labor and material.

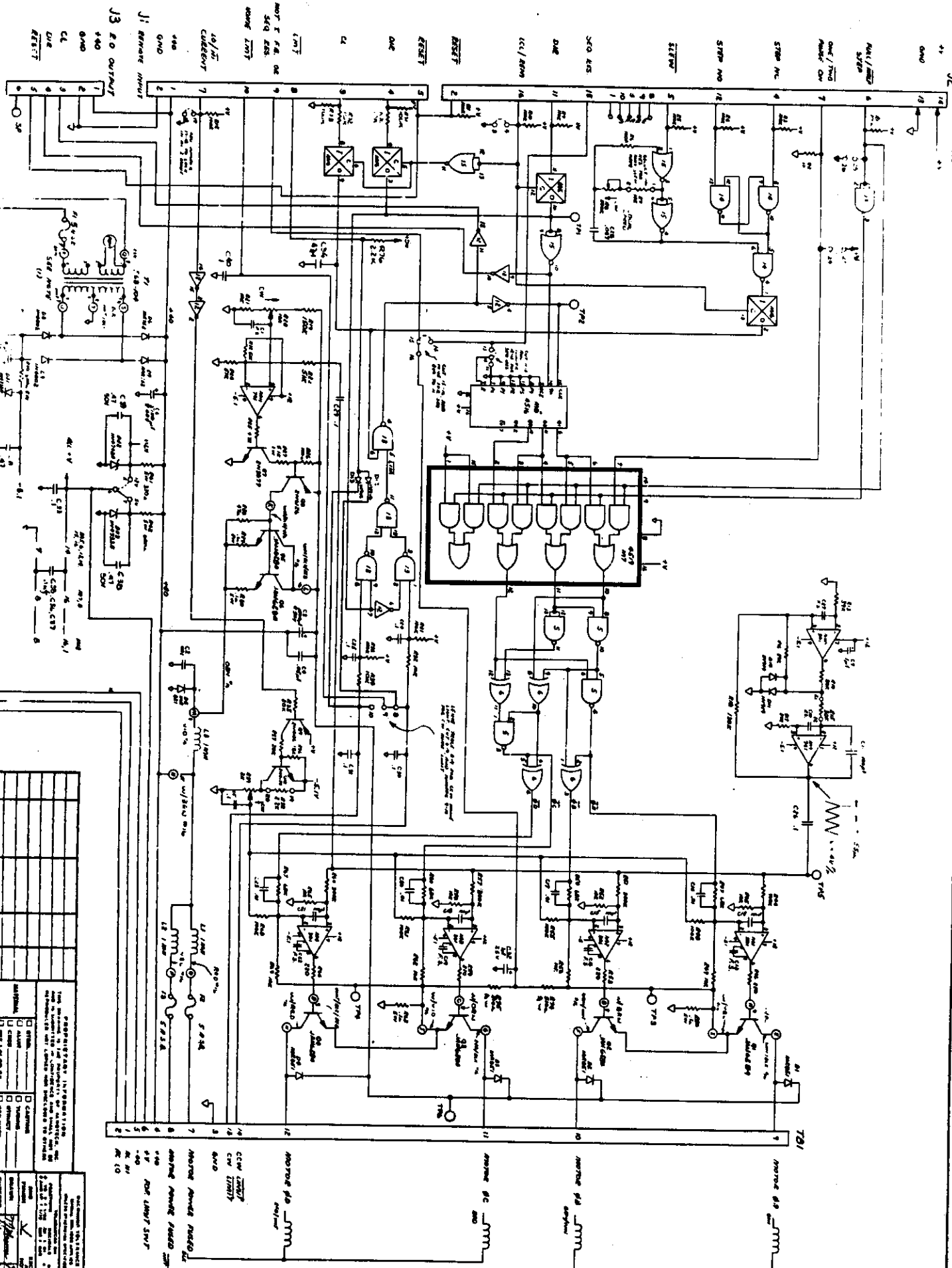
If during the on-site repair it is determined the problem is not warranty related, then the terms and conditions stated in the following "On-Site Non-Warranty Repair" section apply.

### On-Site Non-Warranty Repair

If system or unit cannot be made functional by no-charge telephone assistance or purchased replacement parts cannot be returned to the Aerotech factory for repair, then the following field service policy applies:

Aerotech will provide an on-site field service representative in a reasonable amount of time, provided that the customer issues a bona-fide purchase order to Aerotech covering all transportation and subsistence costs and the prevailing cost per hour including travel time necessary to complete the repair.

AEROTECH, INC., 101 Zeta Drive, Pittsburgh, Pennsylvania 15238 • (412) 963-7470  
TWX 710-795-3125 • FAX 412-963-7459



NO.	DESCRIPTION	QTY	REF. DESIG.
1	74181 ALU	1	U1
2	74180 BCD-to-Decimal Converter	1	U2
3	74182 BCD-to-Decimal Converter	1	U3
4	74183 BCD-to-Decimal Converter	1	U4
5	74138 3-to-8 Decoder	4	U5, U6, U7, U8
6	7414 Schmitt Trigger	4	U9, U10, U11, U12
7	7410 NAND Gate	10	U13-U22
8	7910 PNP Transistor	1	Q1
9	7905 NPN Transistor	1	Q2
10	Resistors	Various	R1-R100
11	Capacitors	Various	C1-C10
12	Inductors	Various	L1-L10

**PROBING INFORMATION:**

FOR TESTING IN A LABORATORY OR WORKSHOP, THE FOLLOWING INFORMATION IS PROVIDED TO ASSIST IN THE IDENTIFICATION OF THE COMPONENTS AND TO ASSIST IN THE IDENTIFICATION OF THE CIRCUITRY.

**TESTING INFORMATION:**

1.  POWER SUPPLY

2.  MOTOR SUPPLY

3.  MOTOR SUPPLY

4.  MOTOR SUPPLY

5.  MOTOR SUPPLY

6.  MOTOR SUPPLY

7.  MOTOR SUPPLY

8.  MOTOR SUPPLY

9.  MOTOR SUPPLY

10.  MOTOR SUPPLY

11.  MOTOR SUPPLY

12.  MOTOR SUPPLY

13.  MOTOR SUPPLY

14.  MOTOR SUPPLY

15.  MOTOR SUPPLY

16.  MOTOR SUPPLY

17.  MOTOR SUPPLY

18.  MOTOR SUPPLY

19.  MOTOR SUPPLY

20.  MOTOR SUPPLY

21.  MOTOR SUPPLY

22.  MOTOR SUPPLY

23.  MOTOR SUPPLY

24.  MOTOR SUPPLY

25.  MOTOR SUPPLY

26.  MOTOR SUPPLY

27.  MOTOR SUPPLY

28.  MOTOR SUPPLY

29.  MOTOR SUPPLY

30.  MOTOR SUPPLY

31.  MOTOR SUPPLY

32.  MOTOR SUPPLY

33.  MOTOR SUPPLY

34.  MOTOR SUPPLY

35.  MOTOR SUPPLY

36.  MOTOR SUPPLY

37.  MOTOR SUPPLY

38.  MOTOR SUPPLY

39.  MOTOR SUPPLY

40.  MOTOR SUPPLY

41.  MOTOR SUPPLY

42.  MOTOR SUPPLY

43.  MOTOR SUPPLY

44.  MOTOR SUPPLY

45.  MOTOR SUPPLY

46.  MOTOR SUPPLY

47.  MOTOR SUPPLY

48.  MOTOR SUPPLY

49.  MOTOR SUPPLY

50.  MOTOR SUPPLY

51.  MOTOR SUPPLY

52.  MOTOR SUPPLY

53.  MOTOR SUPPLY

54.  MOTOR SUPPLY

55.  MOTOR SUPPLY

56.  MOTOR SUPPLY

57.  MOTOR SUPPLY

58.  MOTOR SUPPLY

59.  MOTOR SUPPLY

60.  MOTOR SUPPLY

61.  MOTOR SUPPLY

62.  MOTOR SUPPLY

63.  MOTOR SUPPLY

64.  MOTOR SUPPLY

65.  MOTOR SUPPLY

66.  MOTOR SUPPLY

67.  MOTOR SUPPLY

68.  MOTOR SUPPLY

69.  MOTOR SUPPLY

70.  MOTOR SUPPLY

71.  MOTOR SUPPLY

72.  MOTOR SUPPLY

73.  MOTOR SUPPLY

74.  MOTOR SUPPLY

75.  MOTOR SUPPLY

76.  MOTOR SUPPLY

77.  MOTOR SUPPLY

78.  MOTOR SUPPLY

79.  MOTOR SUPPLY

80.  MOTOR SUPPLY

81.  MOTOR SUPPLY

82.  MOTOR SUPPLY

83.  MOTOR SUPPLY

84.  MOTOR SUPPLY

85.  MOTOR SUPPLY

86.  MOTOR SUPPLY

87.  MOTOR SUPPLY

88.  MOTOR SUPPLY

89.  MOTOR SUPPLY

90.  MOTOR SUPPLY

91.  MOTOR SUPPLY

92.  MOTOR SUPPLY

93.  MOTOR SUPPLY

94.  MOTOR SUPPLY

95.  MOTOR SUPPLY

96.  MOTOR SUPPLY

97.  MOTOR SUPPLY

98.  MOTOR SUPPLY

99.  MOTOR SUPPLY

100.  MOTOR SUPPLY



**AEROTECH, INC.**  
 4005 D STEPPING MOTOR DRIVE  
 9E D 630D1052

NOTE: 1. 10V REGULATOR CURRENT 100mA  
 2. FOR 20V OPERATION CURRENT 100mA  
 3. FOR 30V OPERATION CURRENT 100mA  
 4. FOR 40V OPERATION CURRENT 100mA  
 5. FOR 50V OPERATION CURRENT 100mA  
 6. FOR 60V OPERATION CURRENT 100mA  
 7. FOR 70V OPERATION CURRENT 100mA  
 8. FOR 80V OPERATION CURRENT 100mA  
 9. FOR 90V OPERATION CURRENT 100mA  
 10. FOR 100V OPERATION CURRENT 100mA

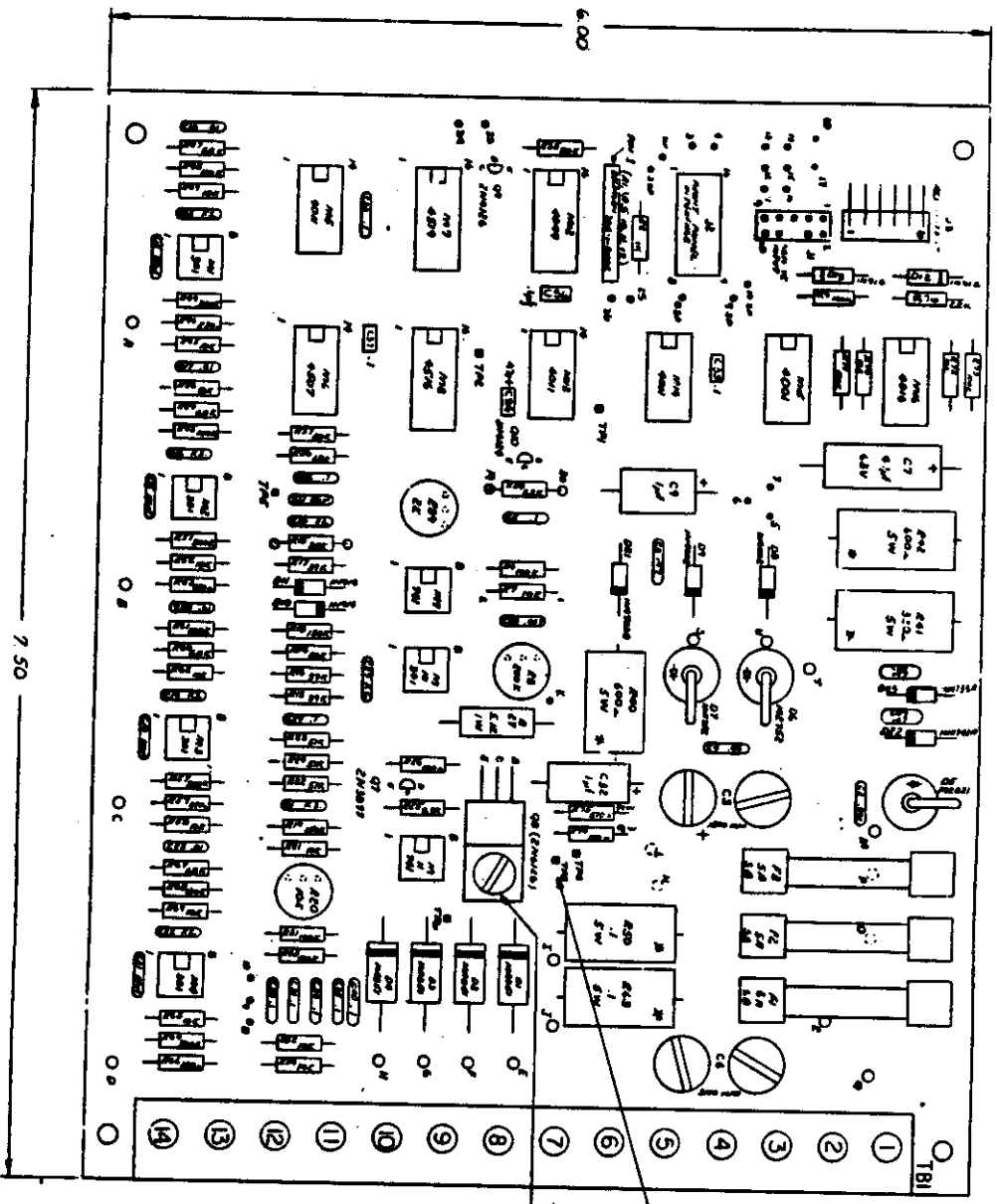
NOTE: 1. 10V REGULATOR CURRENT 100mA  
 2. FOR 20V OPERATION CURRENT 100mA  
 3. FOR 30V OPERATION CURRENT 100mA  
 4. FOR 40V OPERATION CURRENT 100mA  
 5. FOR 50V OPERATION CURRENT 100mA  
 6. FOR 60V OPERATION CURRENT 100mA  
 7. FOR 70V OPERATION CURRENT 100mA  
 8. FOR 80V OPERATION CURRENT 100mA  
 9. FOR 90V OPERATION CURRENT 100mA  
 10. FOR 100V OPERATION CURRENT 100mA

3. B. BOARD

1. 4005 D STEPPER MOTOR DRIVE
2. 4005 D STEPPER MOTOR DRIVE
3. 4005 D STEPPER MOTOR DRIVE
4. 4005 D STEPPER MOTOR DRIVE
5. 4005 D STEPPER MOTOR DRIVE
6. 4005 D STEPPER MOTOR DRIVE
7. 4005 D STEPPER MOTOR DRIVE
8. 4005 D STEPPER MOTOR DRIVE
9. 4005 D STEPPER MOTOR DRIVE
10. 4005 D STEPPER MOTOR DRIVE
11. 4005 D STEPPER MOTOR DRIVE
12. 4005 D STEPPER MOTOR DRIVE
13. 4005 D STEPPER MOTOR DRIVE
14. 4005 D STEPPER MOTOR DRIVE

12. BOARD - BOARD INTERFACES

1. 4005 D STEPPER MOTOR DRIVE
2. 4005 D STEPPER MOTOR DRIVE
3. 4005 D STEPPER MOTOR DRIVE
4. 4005 D STEPPER MOTOR DRIVE
5. 4005 D STEPPER MOTOR DRIVE
6. 4005 D STEPPER MOTOR DRIVE
7. 4005 D STEPPER MOTOR DRIVE
8. 4005 D STEPPER MOTOR DRIVE
9. 4005 D STEPPER MOTOR DRIVE
10. 4005 D STEPPER MOTOR DRIVE
11. 4005 D STEPPER MOTOR DRIVE
12. 4005 D STEPPER MOTOR DRIVE
13. 4005 D STEPPER MOTOR DRIVE
14. 4005 D STEPPER MOTOR DRIVE



NOTE: INSURE MOTOR WINDINGS ARE ON THE (A) SIDE OF THE BOARD (MARKED WITH ARROW IN 1A)

USE C-25 2.54 PITCH NO. LOCKWASHERS & NUTS

NOTE 1) 0.5 INCHES MINIMUM



1) USE AIR LAG COMPONENTS 400-042  
2) IN MOUNT ALL SW RESISTORS OVER THE SURFACE OF CIRCUIT BOARD

REV	DESCRIPTION	DATE	BY	CHKD
1	REVISED TO ADD COMPONENTS	11/18/78	J.C.D.	
2	REVISED TO ADD COMPONENTS	11/18/78	J.C.D.	
3	REVISED TO ADD COMPONENTS	11/18/78	J.C.D.	
4	REVISED TO ADD COMPONENTS	11/18/78	J.C.D.	
5	REVISED TO ADD COMPONENTS	11/18/78	J.C.D.	
6	REVISED TO ADD COMPONENTS	11/18/78	J.C.D.	
7	REVISED TO ADD COMPONENTS	11/18/78	J.C.D.	
8	REVISED TO ADD COMPONENTS	11/18/78	J.C.D.	
9	REVISED TO ADD COMPONENTS	11/18/78	J.C.D.	
10	REVISED TO ADD COMPONENTS	11/18/78	J.C.D.	
11	REVISED TO ADD COMPONENTS	11/18/78	J.C.D.	
12	REVISED TO ADD COMPONENTS	11/18/78	J.C.D.	
13	REVISED TO ADD COMPONENTS	11/18/78	J.C.D.	
14	REVISED TO ADD COMPONENTS	11/18/78	J.C.D.	

REV	DESCRIPTION	DATE	BY	CHKD
1	REVISED TO ADD COMPONENTS	11/18/78	J.C.D.	
2	REVISED TO ADD COMPONENTS	11/18/78	J.C.D.	
3	REVISED TO ADD COMPONENTS	11/18/78	J.C.D.	
4	REVISED TO ADD COMPONENTS	11/18/78	J.C.D.	
5	REVISED TO ADD COMPONENTS	11/18/78	J.C.D.	
6	REVISED TO ADD COMPONENTS	11/18/78	J.C.D.	
7	REVISED TO ADD COMPONENTS	11/18/78	J.C.D.	
8	REVISED TO ADD COMPONENTS	11/18/78	J.C.D.	
9	REVISED TO ADD COMPONENTS	11/18/78	J.C.D.	
10	REVISED TO ADD COMPONENTS	11/18/78	J.C.D.	
11	REVISED TO ADD COMPONENTS	11/18/78	J.C.D.	
12	REVISED TO ADD COMPONENTS	11/18/78	J.C.D.	
13	REVISED TO ADD COMPONENTS	11/18/78	J.C.D.	
14	REVISED TO ADD COMPONENTS	11/18/78	J.C.D.	



4005 D STEPPER MOTOR DRIVE

69021074